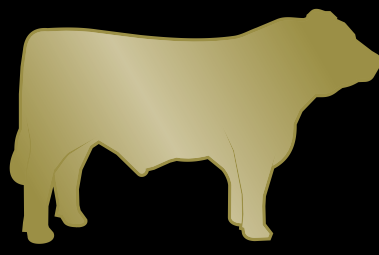


URUGUAY, A COUNTRY OF BEEF



CARNE LATINA
URUGUAYAN BEEF
ANGUS

GRAIN
FED
High Quality
Beef



Inalca Spa, backed by its international presence is evolving its project of import, promotion and market development of high quality beef expanding its range of products with Uruguayan Beef, a selection of the finest Uruguay brands.

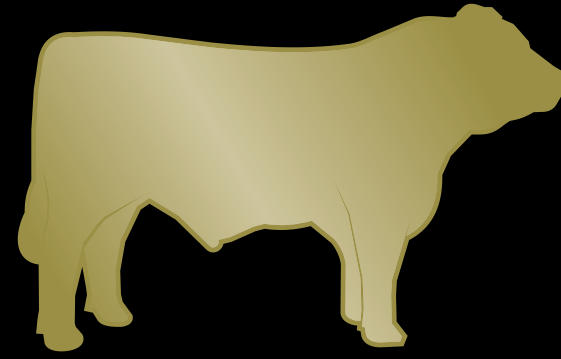
Uruguay is one of the world's largest beef producers, second country in beef consumption per capita and provides work for a quarter of its population in the production of more than 600.000 tons per year.

Thanks to a great export tradition grown over the last 40 years, nowadays Uruguay exports around 80% of the whole domestic production across 100 country worldwide, shipping the most of prime beef cuts to the European market.

Livestock composed by the finest English breeds Angus and Hereford is raised in complete harmony with nature thanks to a temperate climate, fertile lands and large rainfalls benefiting cattle breeding.

Vast plains destined to pastures are ideal for extensive cattle breeding ending with finishing months in feedlots.

Strict quality controls, a guarantee of certified production processes and high quality of products have increased the request of Uruguay beef by the most demanding markets and Uruguay brand is today acknowledged as synonym of high quality and fine taste.



CARNE LATINA
URUGUAYAN BEEF
ANGUS

GRAIN
FED
High Quality
Beef



l'eccellenza nelle carni

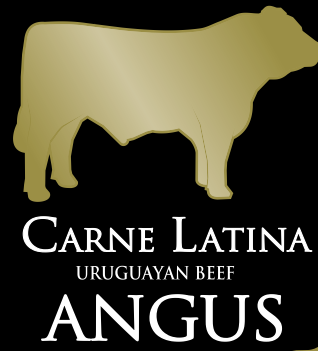
tel: + 39 059 755111
www.inalca.it - info@inalca.it



l'eccellenza nelle carni

EN

BREEDINGS
IN HARMONY
WITH NATURE



GRAIN
FED
High Quality
Beef

GREAT
EXPORT
TRADITION

SYNONYM OF HIGH QUALITY AND EXCELLENT TASTE

| RIBEYE | | | |
|-----------------|---------|------------|--|
| Inalca Code | Pcs.CRT | Weight CRT | |
| Kg 2+ 25725 | 6 vp. | 13 Kg | |
| Kg 2.5+ 25735 | 4 vp. | 11 Kg | |
| SHELF LIFE: 120 | | | |



| STRIPLOIN | | | |
|-----------------|---------|------------|--|
| Inalca Code | Pcs.CRT | Weight CRT | |
| Kg 3.5+ 26043 | 3 vp. | 11 Kg | |
| Kg 4+ 26044 | 3 vp. | 14 Kg | |
| SHELF LIFE: 120 | | | |



| TENDERLOIN C/OFF | | | |
|------------------|---------|------------|--|
| Inalca Code | Pcs.CRT | Weight CRT | |
| lbs 3+ 25722 | 8 vp. | 13 Kg | |
| lbs 4+ 25723 | 7 vp. | 14 Kg | |
| SHELF LIFE: 120 | | | |



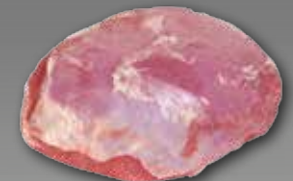
| RUMP CAP | | | |
|-----------------|---------|------------|--|
| Inalca Code | Pcs.CRT | Weight CRT | |
| 26030 | 8 vp. | 12 Kg | |
| SHELF LIFE: 120 | | | |



| HEART OF RUMP | | | |
|-----------------|---------|------------|--|
| Inalca Code | Pcs.CRT | Weight CRT | |
| 26816 | 6 vp. | 13 Kg | |
| SHELF LIFE: 120 | | | |



| KNUCKLE | | | |
|-----------------|---------|------------|--|
| Inalca Code | Pcs.CRT | Weight CRT | |
| 26027 | 5 vp. | 24 Kg | |
| SHELF LIFE: 120 | | | |



| TOPSIDE | | | |
|-----------------|---------|------------|--|
| Inalca Code | Pcs.CRT | Weight CRT | |
| 26025 | 3 vp. | 23 Kg | |
| SHELF LIFE: 120 | | | |



| SHOULDER CLOD | | | |
|-----------------|---------|------------|--|
| Inalca Code | Pcs.CRT | Weight CRT | |
| 26023 | 7 vp. | 22 Kg | |
| SHELF LIFE: 120 | | | |



| SHOULDER BLADE | | | |
|-----------------|---------|------------|--|
| Inalca Code | Pcs.CRT | Weight CRT | |
| 26024 | 10 vp. | 22 Kg | |
| SHELF LIFE: 120 | | | |



| CHUCK TENDER | | | |
|-----------------|---------|------------|--|
| Inalca Code | Pcs.CRT | Weight CRT | |
| 26034 | 18 vp. | 20 Kg | |
| SHELF LIFE: 120 | | | |



| FLAT | | | |
|-----------------|---------|------------|--|
| Inalca Code | Pcs.CRT | Weight CRT | |
| 26029 | 5 vp. | 23 Kg | |
| SHELF LIFE: 120 | | | |



| EYE ROUND | | | |
|-----------------|---------|------------|--|
| Inalca Code | Pcs.CRT | Weight CRT | |
| 26028 | 12 vp. | 24 Kg | |
| SHELF LIFE: 120 | | | |



| TOPSIDE CAP OFF | | | |
|-----------------|---------|------------|--|
| Inalca Code | Pcs.CRT | Weight CRT | |
| 26035 | 4 vp. | 20 Kg | |
| SHELF LIFE: 120 | | | |



| FLAP MEAT | | | |
|-----------------|------------------------------|------------|--|
| Inalca Code | Pcs.CRT | Weight CRT | |
| 26031 | 2 pcs.x vp. 20 vp. x crt. | 22 Kg | |
| SHELF LIFE: 120 | | | |



| FLANK STEAK | | | |
|-----------------|------------------------------|------------|--|
| Inalca Code | Pcs.CRT | Weight CRT | |
| 26032 | 2 pcs.x vp. 28 vp. x crt. | 21 Kg | |
| SHELF LIFE: 120 | | | |



| CHUCK ROLL | | | |
|-----------------|---------|------------|--|
| Inalca Code | Pcs.CRT | Weight CRT | |
| 26022 | 4 vp. | 19 Kg | |
| SHELF LIFE: 120 | | | |



FINEST ENGLISH
BREEDS
A SELECTION
OF BEST BRANDS

