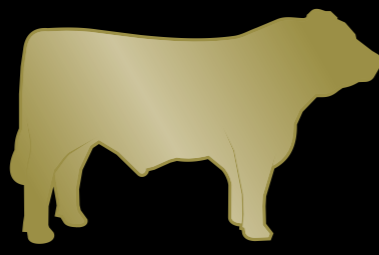


URUGUAY, A COUNTRY OF BEEF



CARNE LATINA
URUGUAYAN BEEF
ANGUS

GRAIN
FED
High Quality
Beef



Inalca Spa, backed by its international presence is evolving its project of import, promotion and market development of high quality beef expanding its range of products with Uruguayan Beef, a selection of the finest Uruguay brands.

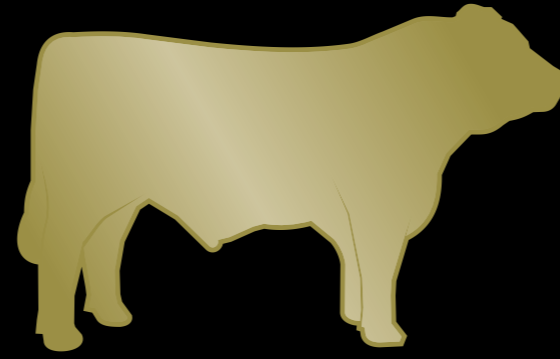
Uruguay is one of the world's largest beef producers, second country in beef consumption per capita and provides work for a quarter of its population in the production of more than 600.000 tons per year.

Thanks to a great export tradition grown over the last 40 years, nowadays Uruguay exports around 80% of the whole domestic production across 100 country worldwide, shipping the most of prime beef cuts to the European market.

Livestock composed by the finest English breeds Angus and Hereford is raised in complete harmony with nature thanks to a temperate climate, fertile lands and large rainfalls benefiting cattle breeding.

Vast plains destined to pastures are ideal for extensive cattle breeding ending with finishing months in feedlots.

Strict quality controls, a guarantee of certified production processes and high quality of products have increased the request of Uruguay beef by the most demanding markets and Uruguay brand is today acknowledged as synonym of high quality and fine taste.



CARNE LATINA
URUGUAYAN BEEF
ANGUS

GRAIN
FED
High Quality
Beef



l'eccellenza nelle carni

tel: + 39 059 755111
www.inalca.it



l'eccellenza nelle carni

EN

BREEDINGS
IN HARMONY
WITH NATURE



GRAIN
FED
High Quality
Beef

GREAT
EXPORT
TRADITION

SYNONYM OF HIGH QUALITY AND EXCELLENT TASTE

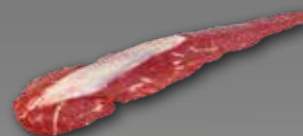
RIBEYE			
Inalca Code	Pcs.CRT	Weight CRT	
Kg 2+ 25725	6 vp.	13 Kg	
Kg 2,5+ 25735	4 vp.	11 Kg	
SHELF LIFE: 120			



STRIPLOIN			
Inalca Code	Pcs.CRT	Weight CRT	
Kg 3,5+ 26043	3 vp.	11 Kg	
Kg 4+ 26044	3 vp.	14 Kg	
SHELF LIFE: 120			



TENDERLOIN C/OFF			
Inalca Code	Pcs.CRT	Weight CRT	
lbs 3+ 25722	8 vp.	13 Kg	
lbs 4+ 25723	7 vp.	14 Kg	
SHELF LIFE: 120			



RUMP CAP			
Inalca Code	Pcs.CRT	Weight CRT	
26030	8 vp.	12 Kg	
SHELF LIFE: 120			



HEART OF RUMP			
Inalca Code	Pcs.CRT	Weight CRT	
26816	6 vp.	13 Kg	
SHELF LIFE: 120			



KNUCKLE			
Inalca Code	Pcs.CRT	Weight CRT	
26027	5 vp.	24 Kg	
SHELF LIFE: 120			



TOPSIDE			
Inalca Code	Pcs.CRT	Weight CRT	
26025	3 vp.	23 Kg	
SHELF LIFE: 120			



SHOULDER CLOD			
Inalca Code	Pcs.CRT	Weight CRT	
26023	7 vp.	22 Kg	
SHELF LIFE: 120			



SHOULDER BLADE			
Inalca Code	Pcs.CRT	Weight CRT	
26024	10 vp.	22 Kg	
SHELF LIFE: 120			



CHUCK TENDER			
Inalca Code	Pcs.CRT	Weight CRT	
26034	18 vp.	20 Kg	
SHELF LIFE: 120			



FLAT			
Inalca Code	Pcs.CRT	Weight CRT	
26029	5 vp.	23 Kg	
SHELF LIFE: 120			



EYE ROUND			
Inalca Code	Pcs.CRT	Weight CRT	
26028	12 vp.	24 Kg	
SHELF LIFE: 120			



TOPSIDE CAP OFF			
Inalca Code	Pcs.CRT	Weight CRT	
26035	4 vp.	20 Kg	
SHELF LIFE: 120			



FLAP MEAT			
Inalca Code	Pcs.CRT	Weight CRT	
26031	2 pcs.x vp. 20 vp. x crt.	22 Kg	
SHELF LIFE: 120			



FLANK STEAK			
Inalca Code	Pcs.CRT	Weight CRT	
26032	2 pcs.x vp. 28 vp. x crt.	21 Kg	
SHELF LIFE: 120			



CHUCK ROLL			
Inalca Code	Pcs.CRT	Weight CRT	
26022	4 vp.	19 Kg	
SHELF LIFE: 120			



FINEST ENGLISH
BREEDS
A SELECTION
OF BEST BRANDS

