

This is a translation of certificate N. IT20/0171.00



The environmental management system of

**INALCA S.p.A.**

Head Office and Plant:

Via Spilamberto, 30/c - 41014 Castelvetro di Modena (MO) - Italy

Has been assessed and certified as meeting the requirements of

**ISO 14001 / UNI EN ISO 14001:2015**

For the following activities

**Beef slaughtering, meat deboning and packing. Research,  
development and production of minced meats, meat preparations  
and other transformed products, included canned meat.  
Bioliqid production through fat straining.  
Byproducts management.**

This certificate is valid from 30/03/2020 until 22/03/2023 and  
remains valid subject to satisfactory surveillance audits.

Re certification audit due before 22/03/2023.

Issue 2. Certified since 22/03/2002 by another certification body.

The audit leading to this certificate commenced on - 02/03/2020  
Previous issue certificate validity date was until 22/03/2020

This is a multi-site certification

Additional site details are listed on the subsequent page.

For this main certificate, the following complementary sub-certificates had been issued:  
**IT20/0171.01 - IT20/0171.02 - IT20/0171.03 - IT20/0171.04**

Authorised by  
Paola Santarelli

SGS ITALIA S.p.A.

Via Caldera, 21 - 20153 MILANO - Italy

t + 39 02 73 93 1 - f +39 02 70 10 94 89 - [www.sgs.com](http://www.sgs.com)

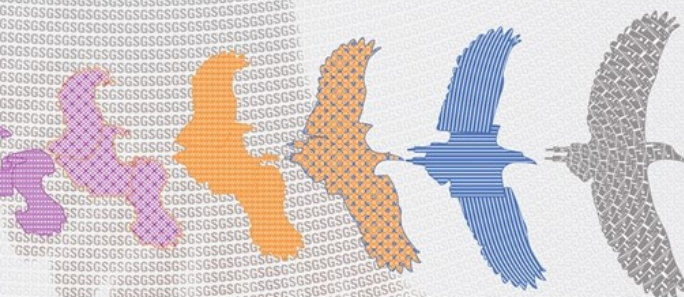
Page 1 of 2



SGA N° 0007 D

Membro di MLA EA per gli schemi di  
accreditamento SGQ, SGA, PRD, PRS,  
ISP, GHG, LAB, LAT, PTP e RMT, di  
MLA IAF per gli schemi di  
accreditamento SGQ, SGA, SSI, FSM,  
PRD e PRS e di MRA ILAC per gli  
schemi di accreditamento LAB, MED,  
LAT, ISP e PTP

Signatory of EA MLA for the  
accreditation schemes QMS, EMS,  
PRD, PRS, INSP, GHG, TL, CL, PTP and  
RMT, of IAF MLA for the accreditation  
schemes QMS, EMS, ISMS, FSMS, PRD  
and PRS and of ILAC MRA for the  
accreditation schemes TL, ML, CL,  
INSP and PTP



This document is a Web version of SGS certificate for electronic use  
exclusively. It shall only be available by clicking on SGS Certification Mark  
which has been posted on Your website. It shall not be printed in anyway.  
This document is copyright protected. No content or appearance may be  
reproduced without the express written permission of SGS. Any misuse,  
alteration, forgery or falsification is unlawful.

INALCA S.p.A.

ISO 14001 / UNI EN ISO 14001:2015

Issue 2



Plants:  
Via Spilamberto, 30/c - 41014 Castelvetro di Modena (MO) - Italy  
Viale Europa, 10 - 26864 Ospedaletto Lodigiano (LO) - Italy  
Viale delle Scienze, 1 - 02100 RIETI - Italy  
Strada Chiaviche, 36 - 46020 Pegognaga (MN) - Italy

ACCREDIA  
L'ENTE ITALIANO DI ACCREDITAMENTO

SGA N° 0007 D

Membro di MLA EA per gli schemi di accreditamento SGO, SGA, PRD, PRS, ISP, GHG, LAB, LAT, PTP e RMT, di MLA IAF per gli schemi di accreditamento SGO, SGA, SSI, FSM, PRD e PRS e di MRA ILAC per gli schemi di accreditamento LAB, MED, LAT, ISP e PTP

Signatory of EA MLA for the accreditation schemes QMS, EMS, PRD, PRS, INSP, GHG, TL, CL, PTP and RMT, of IAF MLA for the accreditation schemes QMS, EMS, ISMS, FSMS, PRD and PRS and of ILAC MRA for the accreditation schemes TL, ML, CL, INSP and PTP